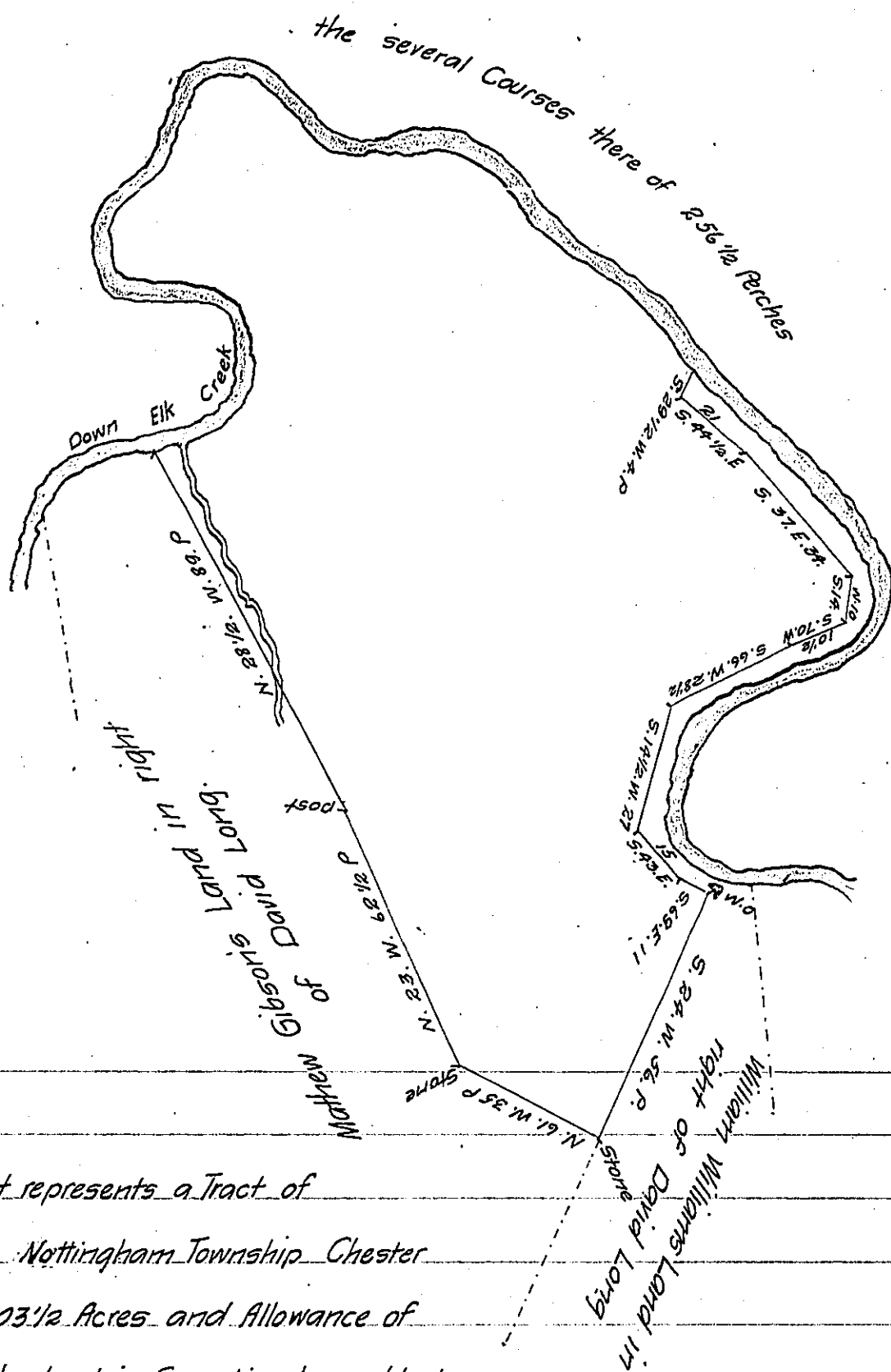


The Courses down the Creek.

N.	69 1/2	E.	16.	p5
N.	23 1/2	E.	11.	
N.	10.	W.	17 1/2	
S.	33.	W.	20 1/2	
N.	14.	W.	23.	
N.	74.	E.	10.	
N.	17 1/2	E.	20.	
N.	47.	E.	10.	
S.	70.	E.	13.	
S.	39.	E.	14.	
S.	66.	E.	15.	
N.	61 1/2	E.	8 1/2	
S.	60	E.	23.	
S.	45 1/2	E.	18.	
S.	56 1/2	E.	16.	
S.	32	E.	21	

Total 256 1/2 Perches.



The above Draught represents a Tract of Land Situate in East Nottingham Township Chester County Containing 103 1/2 Acres and Allowance of six per Cent from the best information I am able to Obtain the Above survey includes 24 1/2 Acres and Allowance of six per Cent lying in the bend of the Creek surveyed by Virtue of a Warrant Granted to David Long the 29th of May 1753 and the remaining 79 Acres being part of a tract of 176 Acres & Allowance of six per cent Surveyed the 7th of 2nd Month 1746 to David Long on his Warrant of the 31st of January 1745/6. Surveyed November 7th 1815

Richard T. Leech Esq^s
Surveyor General

P^r Arthur Andrews. J^r D. S.

IN TESTIMONY that the above is a copy of the original remaining on file in the Department of Internal Affairs of Pennsylvania, made conformably to an Act of Assembly approved the 16th day of February, 1833, I have hereunto set my Hand and caused the Seal of said Department to be affixed at Harrisburg, this...tenth...day of...October...1905

Arthur Andrews
Secretary of Internal Affairs.